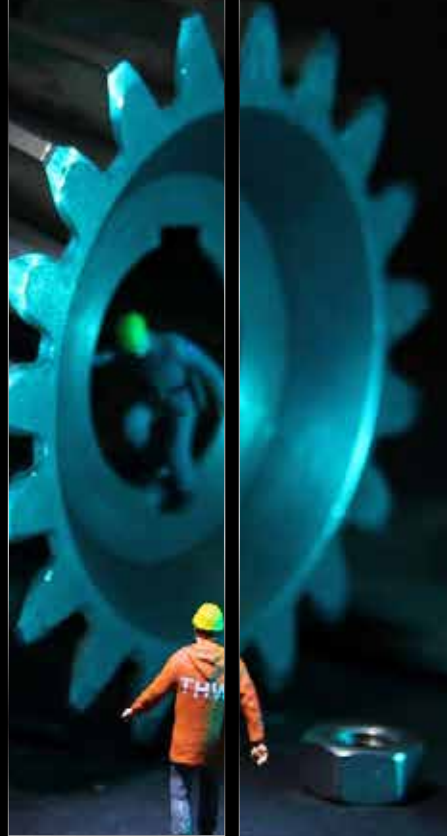
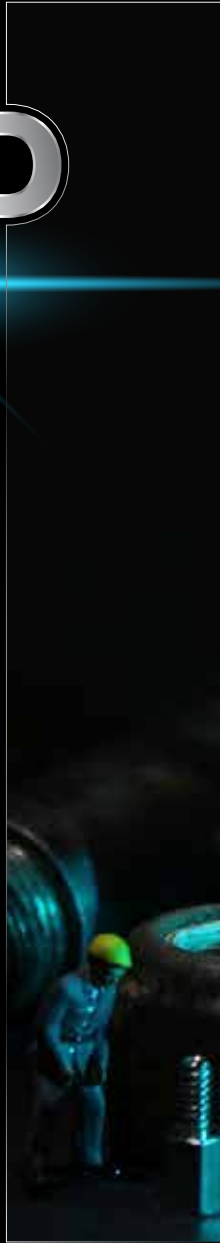


# AI-WAJID

ENTERPRISES  
ESTABLISHED IN

1998



الواجيد

# Contents



**002**  
CHAIRMAN  
MESSAGE

**003**  
Our  
Corporate  
Clients

**004**  
Mission  
Statement  
Company  
Philosophy

**005**  
Al-Wajid  
Enterprises

**006**  
Company  
Resume

**007**  
Al - Wajid's  
Organizational  
Structure

**008**  
Mechanical  
Engineering  
Works

**009**  
Industrial  
Chillers

**010**  
Drinking  
Chillers

**011**  
Cold Rooms &  
Storages

**012**  
Pharmaceutical  
Grade  
Cold Storages

**013**  
Blast Freezers  
And Chillers

**014**  
Cooling Towers

**015**  
Water  
Treatment  
System

**016**  
Submersible  
Pumps

**017**  
Aquaculture  
Engineering

**018**  
Aqua Culture  
Engineering

**019**  
Attachment  
of Floating  
Jetties

**020**  
Fish & Shrimp  
Feed Extruder

**021**  
Aqua Culture  
Engineering

**022**  
Agriculture  
Based  
Technologies

**023**  
Agriculture  
Based  
Technologies

**024**  
Seed  
Germinators

**025**  
Spray Dryer

**026**  
Latest  
Research  
Based Machine  
We Serve

**027**  
Clients Of Alwajid  
Enterprises

**028**  
Al - Wajid  
Enterprises

# CHAIRMAN MESSAGE

**Syed Wajid Hussain** Chairman of **AL-WAJID ENTERPRISES** would like to thank you for your continued support.

At **AL-WAJID** our motivation comes from the opportunity to help shape the future. We concentrate not only on what is essential to our business success, but also on what works for our people, our communities and our shared natural environment.

**AL-WAJID'S** position gives us the ability to influence core themes we believe must be addressed in order for our industry to thrive today and in the years to come. These imperatives are climate change; industry trust and security; and skills for the future workforce. We have also embedded the UN's Sustainable Development Goals (SDGs) in our sustainability strategy to help accelerate progress.

**AL-WAJID** we work to maximize opportunities for our customers' by providing an efficient platform that limits resource use, and products that strive for sustainability in all respects. We have the capability to reduce our customers' energy consumption by writing algorithms that maximize efficiency by minimizing idle time. We aim to ensure that our products make efficient use of physical resources, like materials and energy, throughout their life cycles.

We are in business & serving the Corporate & SME business segments since 1998.

Our H R Teams, well understand the customers' needs & problems and provide them the best cost effective solutions for mutual benefits.

Chairman **AL-WAJID ENTERPRISES**

Syed Wajid Hussain

Vice President

Executive Committee of Korangi Association of Trade & Industry

President

R & D Standing Committee of KATI and

Standing Committee for IT



# Our Corporate Clients



DEFENCE OFFICERS HOUSING  
AUTHORITY KARACHI





# MISSION STATEMENT

Our mission is to build our reputation for integrity, excellence, and leadership as one of the finest Engineering, Aqua Marine and contracting organization by:

- Continuously improving the standards and quality of our products & services;
- Constantly striving to exceed each client's expectations;
- Maintaining our dedication to the highest moral principles and;
- Providing a challenging and secure environment for our people

# COMPANY PHILOSOPHY

Our company philosophy revolves around being regarded by all of our stakeholders as being honorable and meticulous.



---

# AL-WAJID ENTERPRISES

Manufacturer, Importers, Consultants, Service Provider and R&D Organization

## INTRODUCTION

Al - Wajid Enterprises established in 1998 as Manufacturer, importers, consultants, Service Provider and R&D Organization along with suppliers, indenters & adviser.

We are specialized in (R&D) projects, and cater Universal electric water cooler to Corporate & SME business segments along with manufacturing, assembling, designing refrigerants machines & equipment's and managing a state of art workshop armed with the latest equipment's for molding, sheering, charging, powder coating, welding, and coloring facilities with highly skilled engineers & dedicated teams.

**Al - Wajid provides industrial and commercial 'SOLUTIONS' in designing of indigenous Projects, engineering solutions, equipment Selection, project execution, testing, Commissioning and annual maintenance services in HVACR (Heating Ventilation, Air-Conditioning and Refrigeration) field under one roof.**

## HVACR WORKING

We have business collaborations with well reputed International Brands (European, American & Chinese brands). Our Engineers have vast experience in HVACR field for Industrial and commercial applications.

We Deals in, Japanese's & USA Brands of Air Conditioning Systems, mainly in Air & Water Cooled, Screw & Scroll Chillers, Package units, Fan Coil Units, etc. We market our products with the 'Brand Name' **CITY GENERAL**.

Further to this we execute & manage Aqua / Aqua culture and Civil Engineering centered Projects and Works. We are Registered with Engineering Council of Pakistan for performing Civil Engineerin based project(s)/ Solutions particularly for the projects of Aqua-marine.

We also cater, develop and provide solutions for Pharmaceutical, I T Fields, and Floating Docks Complete Solutions, alongwith, we represent the manufacturers of world's prime brands of Pumps & Motors. Our main focus & aims are to provide cost effective solutions for SME Business segment particularly.

# COMPANY RESUME

Al – Wajid Enterprises (Engineering, R & D and Corporate & Commercial Business Group)

## BUSINESS NATURE:

- ⚙ R & D Institution
- ⚙ Civil, Electrical & Mechanical Engineering services / Contractor
- ⚙ Aqua Culture Consultants & Project executer / Contractor
- ⚙ Business Form 'Sole Proprietorship'
- ⚙ Established in 1998
- ⚙ Constructor License: Pakistan Engineering Council
- ⚙ Electrical Contractor License: Govt. of Sindh

## CERTIFIED REGISTRATION

- 1) Karachi Chamber of Commerce & Industry
- 2) Pakistan engineering council
- 3) Income Tax Registered (Tax- Filer)
- 4) General Sales Tax Registered
- 5) Sindh Sales Tax Registered
- 6) Professional Tax Registered
- 7) EOBI Registered

## COMPANY CORE PERSONNEL'S

- ⚙ R & D Engineers & Allied Teams
- ⚙ HVAC Engineers
- ⚙ Boiler Service Engineers & Associates
- ⚙ Project Managers / Engineers & Associates
- ⚙ H R Head & Associate team
- ⚙ 24 Hour Call out facility.
- ⚙ Corporate & Commercial Products Developers & Engineers
- ⚙ Electrical, Electronic Engineers & Associates
- ⚙ Contracts Managers & Associates
- ⚙ Civil and Infrastructure Projects Managers & Engineers
- ⚙ Finance Department Head & Associates

**We also have access to a wide variety of approved sub-contractors for specific requirements**

# AL -WAJID'S ORGANIZATIONAL STRUCTURE

## MANUFACTURING S B U

Under this SBU we provide the Solutions of manufacturing of various machineries & their components for Corporate, Commercial and SME business segments / markets of the country.

Some of the key manufactured items & the allied components are mentioned hereunder :  
(Refer our Web Page for the list of key Products & Components)

## Research & Development /SBU

Under our R & D setup / SBU we provide the Solutions of manufacturing, assembling and execute R&D of engineering products along with customized Projects for Corporate, Commercial & SME business sectors of the economy. Our key engineering & customized products, equipment's along with the allied components are listed below

- ⚙ Pressure Vessels, Mixers , Cabinets, Dryers, High Vacuum Cabinets, Boilers.
- ⚙ Tube and Shell Chillers, Cold storages, Mortuary cabinets, Fluidized bed – Dryers.
- ⚙ Lyophilizer, Dehydrators, Food Spray Dryers, Flush Dryers.
- ⚙ Concentrators, Vacuum Distillation Units, Vacuum Packing Machine's
- ⚙ Autoclaves Aquaculture Products, Shrimp and Fish Hatcheries System.

we provide customized solutions along with the under mentioned few products, Seeds Germinators, Dryers of various types such as Seeds Dryers, Tray Type Dryers, Rotary Type Dryers, Centrifuge Dryers, etc.

## Pharmaceutical Industry Solutions:

For Pharmaceutical Industry we have following Solutions: Stainless Steel Tanks, Tassels Tanks, Circulatory Tanks, Evaporator Units, Cryogenic Machines, Low Freeze dryers, etc.



# MECHANICAL ENGINEERING WORKS

## SUPPLY & SERVICES:

- ⚙️ Fabrication Services of engineering products/ Installation Erection/Insulation.
- ⚙️ Turn Key bases Engineering Solutions
- ⚙️ Structural Fabrication/Welding/Erection
- ⚙️ Firefighting System Installation and its Contractual Maintenance.
- ⚙️ Complete Solution of Cooling Towers Products and related projects & jobs

## ELECTRONIC PRODUCTS

Some of the key Electronic Products & Components are:

- ⚙️ All Types DCDC Converter LDO Regulator LED Driver Controller
- ⚙️ IC Mixed Signal
- ⚙️ Real Time Clock IC Reset IC (VD) Reset Timer
- ⚙️ Li-ion Battery Protection
- ⚙️ IC Multiple - PMU
- ⚙️ IC Switch IC Watchdog Timer

## CONSULTING SERVICES

Al – Wajid Enterprises provides consulting Services in the disciplines of Mechanical and Electrical Engineering and offshores Jobs, since its inception and have supplied Mechanical and Electrical systems, design the projects and supervisory services to the selected business segments from analysis to strategy and execution.

Our professionals comprehend you through projects from start to finish. Expert project engineers at the concept and design phase manage the procurement and construction phase. Construction coordinators carry the project through to completion, turn-over, commissioning and project close-out. Our talented professionals utilize a variety of design and performance tools, analytic software, drafting, CAD, and Building Information Modeling (BIM) to provide the analysis and documentation desired for your projects, today and tomorrow.

# INDUSTRIAL CHILLERS (Heavy chillers & water chillers)

Industrial chillers are central to many upstream, midstream and refining operations. A chiller is a machine that removes heat from a liquid via a vapor-compression cycle. This liquid can then be circulated through a heat exchanger and then used to cool air or other process equipment.

A vapor-compression chiller uses a refrigerant internally as its working fluid including R134a, R22, R410a R508B R404a. In addition to the working fluid, many standard and custom options are available when selecting a chiller; however, key components of the system include compressor, control and starter panels, evaporators, condensers and required PLC system.



Even though most engineers view the Industrial Chiller as 'just a cooling source', important parameters to consider are the operating temperatures and pressures as well as matching the cooling temperature requirements and refrigerant cooling characteristics.



# DRINKING CHILLERS

Drinking water chillers for recirculation for extruder and cool water circulation Bristol, Copland compressors (USA). Piston, reciprocating Tank SS-304-316 with the backup of professional Engineering teams / technician's.

We develop Top to bottom SS-304-202 Drinking Chillers including SS Tanks; we also offer 'Epoxy Coated' models. With all relevant indicators as per users requirements.



# COLD ROOMS & STORAGEES

(Cooling Cabinets and Condensing Units)

## Cold storages & Controlled atmospheric units

These types of cold storages are meant for storing numerous types fresh fruits and vegetables and many horticulture products which require pre-cooling or rapid room cooling for a short time to long hours period (4 to 24 hours) depending on requirements in order to preserve the product and make extensive shelf life.

We can also provide modified refrigerated container solutions that meet all your requirements, ensuring your products are stored in the optimum conditions. Bespoke options for our refrigerated containers include temperature monitoring, ramps, alarm systems, shelving and much more.



# PHARMACEUTICAL GRADE COLD STORAGES

Al - Wajid offer Pharma grade cold storage solutions to hospitals and pharmaceutical businesses across the country and abroad. Medicines, blood packages and chilled pharmaceutical solutions are just some of the delicate products that require sensitive temperature control units and for smooth transportation within the industry / country. Due to its eminent importance & the nature of the items AL - WAJID have created a special range of pharmaceutical cold storage units specifically designed keeping in view their sensitive use. Low Freeze dryer / Cryogenic lyophilizer for vaccine and foods purpose





# BLAST FREEZERS AND CHILLERS

Blast freezers and chillers are the perfect solution for businesses that are looking for prompt cooling results. This type of cold storage is typically used by companies with a need to cool and store food before it reaches its final destination (as interim arrangements). However, these units are also a popular option for restaurants, canteens and catering companies who wish to prepare various food dishes in advance without compromising on food quality.



# COOLING TOWERS

Cooling Towers were principally created to eliminate excess warmth from water, used in industrial operations and send it out into the surrounding biosphere. Surprisingly, there are many different techniques are in use for achieving this process. Since there is a high degree of variation between how these devices operate, they are classified within a number of distinct groups.

## Cross Flow:

It is a design in which the air flow is directed perpendicular to the water flow (see diagram).

**Air Flow:** In this type one or more vertical faces of the cooling tower works together to meet the filling of the material. Water flows (perpendicular to the air) through the fill by gravitational force. We do have Chillers of various capacities from 100 to 500 tons.



# WATER TREATMENT SYSTEM

(PUMPS, BLOWER, VERTICAL TURBINE PUMP)

There are four common types of household water treatment systems, and they are: **Filtration System:** This is a water filter device that will remove impurities by means of a physical barrier, chemical, or a biological process.

The following are various types of water quality improvement systems, which may or may not apply to your particular water problems. Discuss the options available to you with your water quality improvement professional:

Any method other than those listed above should be investigated carefully before making a purchase. No one piece of equipment is a cure-all for all water problems. Be wary of any salesperson who may imply that a particular technology will improve all water problems, or require no maintenance.

- ⚙️ Leather industry
- ⚙️ Pharma industry
- ⚙️ Textile industry
- ⚙️ Food treatment plant



# SUBMERSIBLE PUMPS

- ⊗ Submersible Drainage /Sewage /Vortex Pumps
- ⊗ Submersible Industrial Sewage Pump
- ⊗ Submersible Sewage Grinder Pump
- ⊗ Submersible Stainless Sewage Grinder Pump
- ⊗ Submersible Industrial Cutter Pump for Sewage
- ⊗ Submersible Deep well Pump

## SURFACE PUMP

- ⊗ Surface Centrifugal Pump
- ⊗ Hydro-Massage Pump
- ⊗ (SUPER) electronic Constant Pressure Pump

## CHEMICAL PUMP

- ⊗ FRPP/PVDF Pump
- ⊗ Casting Stainless Pump

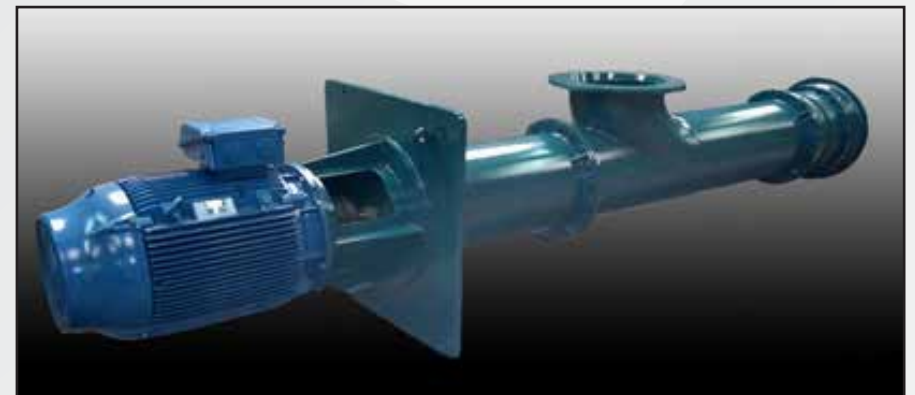
## BLOWER AND AERATOR

- ⊗ Turbo Blower
- ⊗ Oil Mist Collector
- ⊗ Ring Blower
- ⊗ Three Lobes Roots Blower
- ⊗ Paddlewheel Aerator (Aquaculture use)
- ⊗ Motor and Automatic Booster set
- ⊗ Electric Motors

We provide cost effective Solutions in Industrial Specialized Pumps.

We are Authorized representative of various International Brands'

Pumps' in Pakistan. (Taiwan &Korean / SHOWFOU, CHZRI )





# AQUACULTURE ENGINEERING

(LATEST RESEARCH AND DEVELOPMENT OF ALWAJID ENTERPRISES REGARDING OFFSHORE AREAS)

## **Fish & shrimp farming cages**

Cage aquaculture has grown rapidly in recent decades and is currently undergoing swift changes in response to pressures from globalization and an escalating worldwide global demand for aquatic products. There has been a move towards clustering existing cages as well as towards the development and use of more intensive cage-farming systems. In particular, the need for suitable sites has resulted in cage aquaculture accessing and expanding into new untapped open-water culture areas such as lakes, reservoirs, rivers and coastal brackish and marine offshore waters



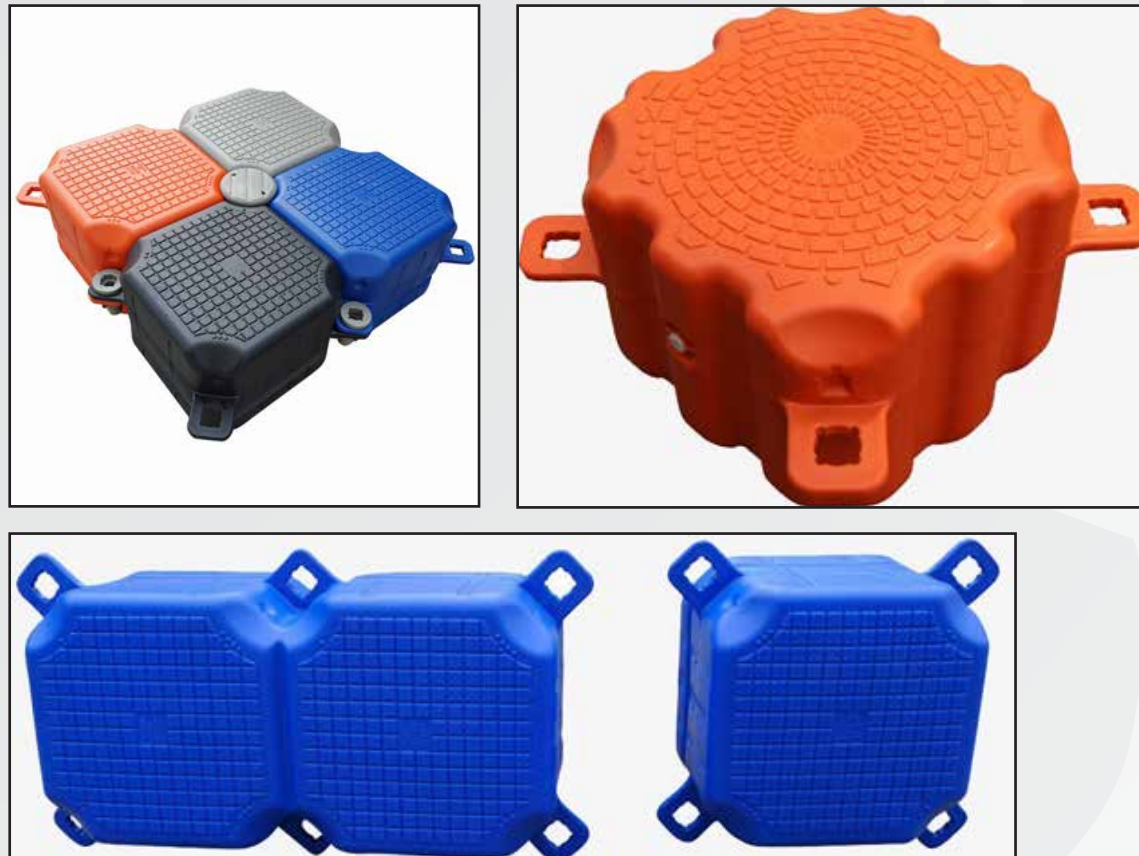


# AQUA CULTURE ENGINEERING

## (HDPE FLOATING JETTIES AND OFFSHORE WORK)

Floating docks or jetties are man-made structures that rise and fall with the tide. They are usually supported by plastic or metal pontoons which can be easily assembled and deployed. In tropical environments they are often used as platforms for recreational sports, in pleasure-craft marinas, and in order to prevent tourists from treading directly on the reef.

Floating dock, floating pier or floating jetty is a platform or ramp supported by pontoons. It is usually joined to the shore with a gangway. The pier is usually held in place by vertical poles referred to as pilings, which are embedded in the seafloor or by anchored cables. Frequently used in marinas, this type of pier maintains a fixed vertical relationship to watercraft secured to it, independent of tidal, river or lake elevation.



# ATTACHMENT OF FLOATING JETTIES

High grade heavy duty manufactured floating docks and cages with best strengthen supports accessories  
Incentive and super incentive culture system salt and sweet water



<b>1. Single pentoon cubes 1 (500*500*400mm)</b>				
Blue	Gray	Black	Orange	
<b>2. Single pentoon cubes 2 (500*500*400mm)</b>				
Gray	Orange	Coffee	Blue	Black
<b>3. Twin pentoon cubes (1000*500*400mm)</b>				
Blue	Black	Gray		
<b>4. V. cubes (500*500*345mm)</b>				
Gray	Blue			

<b>U-cubes with roller</b>	<b>Gray without roller</b>	<b>project</b>

## Accessories

### 6.Components and accessories

<b>Short pin</b>	<b>Bolt and nuts</b>	<b>V.float pin</b>	<b>cushion</b>
<b>Steel short pin</b>	<b>Small bollard</b>	<b>Big bollard</b>	<b>Stainless Steel bollard</b>
<b>Big fender</b>	<b>Small fender</b>	<b>Crashworthy ball</b>	<b>Ladders</b>
<b>Long bolts</b>	<b>Long pin</b>	<b>Spanner</b>	<b>Hammer</b>
<b>Pile guide 1</b>	<b>Pile guide 2</b>	<b>Railing with ppr</b>	<b>Railing with rope</b>

# FISH & SHRIMP FEED EXTRUDER





# AQUA CULTURE ENGINEERING

(ICE FLAKE MACHINE, VMS FISH FINDER, SONAR TECHNOLOGY, GPRS BASED MONITORING SYSTEM & FLOATING BOUY)

## Ice flake, bed of freshness

**Granular ice flakes with high water content. Easy to store, place and weigh.**

Flake ice has a lot of uses, from the preservation and display of fish to cocktail creation to its use in Spas. Flake ice is also widely used in hospitals and during the production of cold meats and bread, designed to chill the mixture. Flake ice has the great advantage of being easy to manipulate and weigh.



## FISH FINDER SONAR TECHNOLOGY

With the advancement of science and technology, the fishing harvest processes have experienced a lot of change. The sonar fish detecting procedure is a modern process to locate fish shoals. Sonar is a modern method that helps to find out the deep water submarines, wrecks and other objects that are present underwater. The main factors that affect the working of the sonar system are an efficient transducer, high power transmitter, acoustic communication systems and sensitive receiver. Most of the large fishing companies do use this process to catch huge shoal of fish, thus reducing carbon footprints and wastage due to bad fish catching

# AGRICULTURE BASED TECHNOLOGIES

## DEHYDRATORS, SEED GERMINATORS, SEED SAVERS

A food dehydrator is a device that removes moisture from food to aid in its preservation. Food drying is a method of preserving fruit, vegetables, and animal proteins that has been practiced since antiquity.

A dehydrator is a tool that uses low temperatures and a fan to dry food. It essentially removes the water from food, but it keeps the enzymes of your raw food intact.

It will easily dry fruit, veggies, herbs, nuts, berries, and jerky in a matter of hours –perfect for you to enjoy home preserved goodness.

A food dehydrator uses a heat source and air flow to reduce the water content of foods. The water content of food is usually very high, typically 80–95% for various fruits and vegetables and 50–75% for various meats. Removing moisture from food restrains various bacteria from growing and spoiling food. Further, removing moisture from food dramatically reduces the weight of the food. Thus, food dehydrators are used to preserve and extend the shelf life of various foods.

Devices require heat using energy sources such as solar or electric power or biofuel,[3] and vary in form from large-scale dehydration projects.

A commercial food dehydrator's basic parts usually consist of a heating element, a fan, air vents allowing for air circulation and food trays to lay food upon. A dehydrator's heating element, fans and vents simultaneously work to remove moisture from food. A dehydrator's heating element warms the food causing its moisture to be released from its interior. The appliance's fan then blows the warm, moist air out of the appliance via the air vents. This process continues for hours until the food is dried to a substantially lower water content, usually less than 20%.

Most foods are dehydrated at 130 °F (54 °C), although meats being made into jerky should be dehydrated at a higher temperature of 155 °F (68 °C).



# SEED GERMINATORS

A seed germinator is a device for germinating seeds typically, these create an environment in which light, humidity and temperature are controlled to provide optimum conditions for the germination of seeds.

One type of germinator is the Copenhagen or Jacobsen tank. The seeds rest upon blotting paper which is kept moist by wicks which draw from a bath of water whose temperature is regulated. The humidity around each seed is kept high by means of glass funnels and a lid covering the tank

## SEED GERMINTOR



Al-Wajid Enterprises

PLC USER FRIENDLY  
ONE TOUCH OPERATION

25 to 50 KGs  
Capacity

Natural Control  
PARAMETER





The UNI-50 SG is specifically designed for consistent, uniform seed germination. To accommodate a wide range of seed types the Uni-50 SG features a temperature range from -5°C to +50°C – the lower temperatures being advantageous for pre chilling to overcome dormancy. The natural humidity of the unit (up to 98%) ensures adequate moisture is available for seeds, while the horizontal airflow design ensures excellent temperature and humidity uniformity throughout the growing area. The user adjustable fan speed further enhances airflow control. Externally mounted cool white fluorescent lights enable equivalent light intensities at all temperature ranges for more consistent germination.. Shelving is also vertically adjustable so that you can accommodate the full range of germination seed

www.alwajid.pk email. alwajid@yahoo.com alwajidpk@gmail.com

al-wajid enterprises

F-110 sector 31-E,  
Lucknow cooperative housing society korangi  
Road ,Karachi  
www.alwajid.pk  
0333-3553409  
alwajid@yahoo.com

## Seed Germinator

Test Quality Seed Germination before yield





## Seed Saver (City General)

Seed Dryer Reduce Moisture contents in Stock Seed  
Model 1000 Kg Ph, Alternate Source Heat ,Tractor  
Application ,Movable  
Model Uni-1000-1500 KWH 50-0W

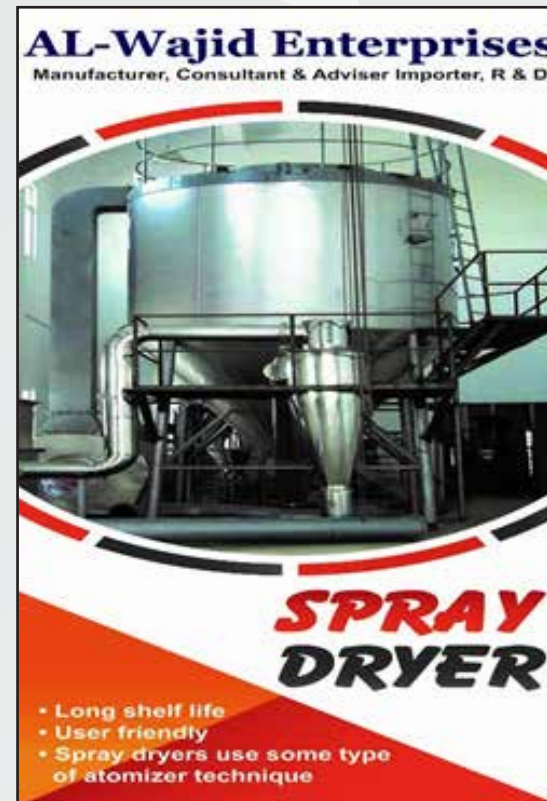


www.alwajid.org

# SPRAY DRYER

Spray drying is a continuous process used to manufacture free-flowing dry powders from a liquid feedstock. The liquid feedstock is atomized into a heated air stream where the droplets rapidly dry to form individual particles. The resulting product is a free-flowing powder. Particle size, morphology and moisture content can be controlled by adjusting dryer parameters, nozzle configuration and feed properties. Spray drying is widely used across many industries and can efficiently dry commodity material as well as create value-added, designer particles.

**ALWAJID'S** utilizes both tower and horizontal box dryers equipped with two-fluid and hydraulic spray nozzles to process a variety of aqueous **ALWAJID'S** full-service analytical laboratory allows for rapid process adjustments during trials and excellent quality control for production operations. Spray dried products can be characterized by measuring particle morphology, size distribution and moisture content. Additionally, extensive pre- and post-processing capabilities contribute to the turnkey experience **ALWAJID'S** provides.



# LATEST RESEARCH BASED MACHINE WE SERVE





# CLIENTS OF ALWAJID ENTERPRISES

## Government department

⊗ Pakistan council of scientific & industrial research laboratories  
Complex Karachi & Lahore (PCSIR)

- ⊗ National institute of oceanography (NIO)
- ⊗ Sindh fisheries and live stocks department
- ⊗ Pakistan Navy
- ⊗ Army base
- ⊗ Pakistan state oil (PSO)
- ⊗ Karachi university
- ⊗ Schools and colleges

## PRIVATE COMPANIES (NATIONALS & MNCS)

- ⊗ Artistic Milliner's
- ⊗ Martin dow
- ⊗ Siddique Sons Textile
- ⊗ Rajby Industries
- ⊗ Atlas Honda
- ⊗ Ghouri Industries
- ⊗ Caltex
- ⊗ Hilton Pharma
- ⊗ Abbot Pharma
- ⊗ Majeed enterprises
- ⊗ Many school, colleges & hospitals
- ⊗ Mecotex

- ⊗ Sindh poultry vaccine
- ⊗ Civil aviation
- ⊗ State bank of Pakistan
- ⊗ KE (Karachi Electric)
- ⊗ Tando-jam agriculture university
- ⊗ Ned university

- ⊗ Gul Ahmed
- ⊗ Yunus Textile
- ⊗ Soorty Textile
- ⊗ Toyota Indus
- ⊗ King's group of industries
- ⊗ Shazad Apprael
- ⊗ CBM institute
- ⊗ Indus Pharma
- ⊗ English Biscuite (pvt) ltd
- ⊗ Ideal electronics
- ⊗ Metco textiles
- ⊗ Mundiyaal

---

# AL-WAJID ENTERPRISES

MANUFACTURER, IMPORTERS, CONSULTANTS,  
SERVICE PROVIDER AND R&D INSTITUTE

NTN: 1350686-2

SALES TAX: 12-02-9999-625-28 Numbers for Karachi Pakistan

LAWYER: HAFEEZ ASSOCIATES

Registered with:

HVACR Pakistan.

Pakistan engineering council "PEC" (C4)

Pakistan scientific research institute (PCSIR)

Karachi Chamber of Commerce.

Korangi Trade and industry Association.(KATI)

China offshore projection

Member Pakistan Malaysia friendship association

Member Pakistan Russia friendship association



# CONTACT US

## AL-WAJID ENTERPRISES

Corporate Office Karachi : SECOND FLOOR # 202 AWAIN-E-SANAT  
KORANGI INDUSTRIAL AREA KARACHI PAKISTAN  
Cell: 03333553409, 03333206484, 03343805809  
PTCL: 0213-5111040, 0213-5111050

Head office : F-110 SECTOR , 31.E  
LUCKNOW CO-OPERATIVE HOUSING SOCIETY,  
KORANGI ROAD . KARACHI . PAKISTAN  
Cell: 03333553409, 03333206484, 03343805809  
Tel: 0213-5111040, 0213-5111050  
Skype: alwajidpk, whatsapp: 03333553409 QQ. 3081642248  
Email: Alwajid@yahoo.com Email: alwajidpk@gmail.com  
www.alwajid.pk

